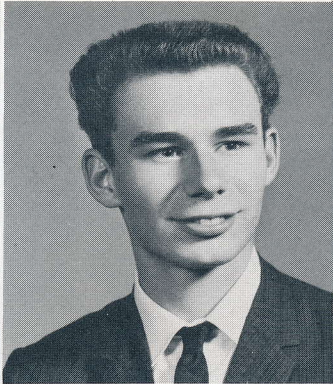


# Seniors, June, 1962

**DENNY CIESLAK**

Intramurals, Hall Guard, Mixed Chorus, Showboat.

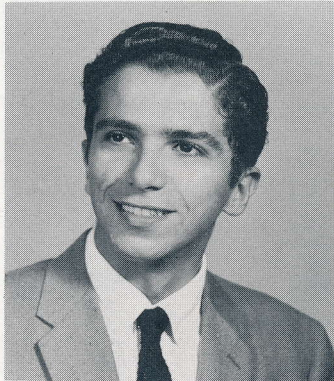


**DAVID COSMAN**

Science Club, Radio Club, Intramurals, Lab Assistant.

**WILLIAM CIRESI**

Intramurals, Citizenship.

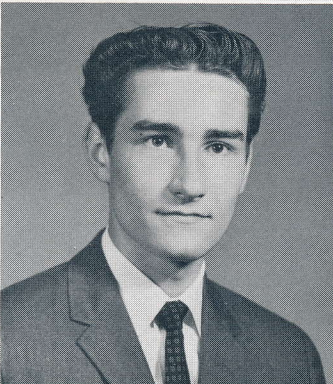
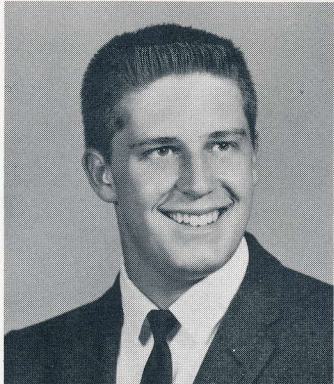


**LOUISE CRIMALDI**

G.A.A., Y-Teens, Booster Club, Showboat, Business Girls, Glee Club, Homeroom Officer, Citizenship, Intramurals, Canteen.

**PAUL CLARKE**

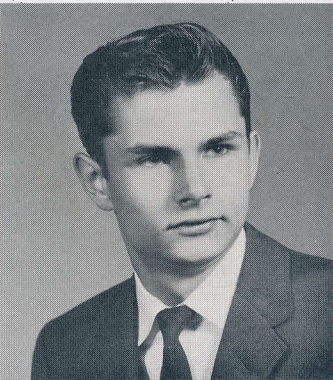
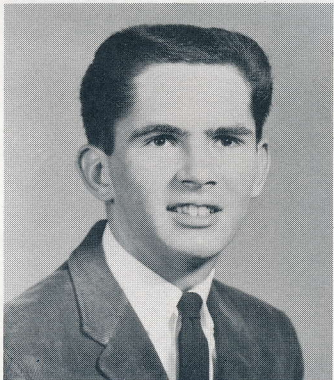
J. V. Football, Leaders, Citizenship, Choir, Mixed Chorus, Intramurals.



**DAVID CROCKER**

**ROGER CLARKE**

Cross-Country, Citizenship, Showboat, Intramurals, Homeroom Officer.



**EMMETT CROCKER**



**LEONARDA CSUMITTA**

Intramurals, Hostess Club, Booster Club, Citizenship, Teacher's Secretary.



# Seniors, June, 1962

## DIANE CUDNIK

G.A.A., Intramurals, Leaders, Booster Club, Business Girls, Librarian, Citizenship, Y-Teens.



## MARCIA DAVIS

G.A.A., Business Girls, Intramurals, Citizenship, Booster Club, Homeroom Officer, Teacher's Secretary.

## THERESE D'AMICONE

G.A.A., Intramurals, Homeroom Officer, Future Nurses, Leaders, Y-Teens, Librarian, Citizenship, Booster Club.

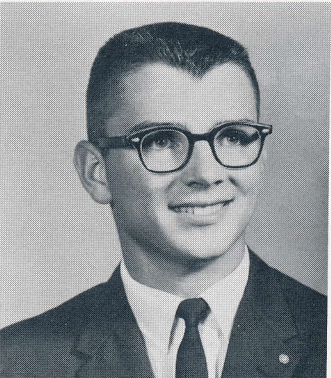


## SANDY DAVIS

G.A.A., Y-Teens, Booster Club, Intramurals, Citizenship, Mixed Chorus, Glee Club, Showboat, Teacher's Secretary.

## MEGAN DAVIES

Booster Club, Band, Pep Band, Leaders, G.A.A., Y-Teens, Citizenship, Intramurals, Showboat, Canteen.

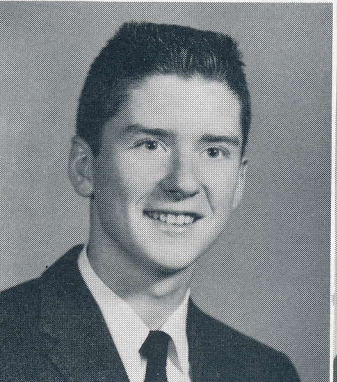


## BOB DEAO

Band, Orchestra, Pep Band, Intramurals, Showboat, Citizenship.

## BOB DAVIES

Band, Pep Band, Baseball.

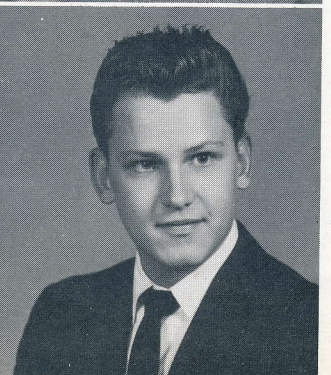
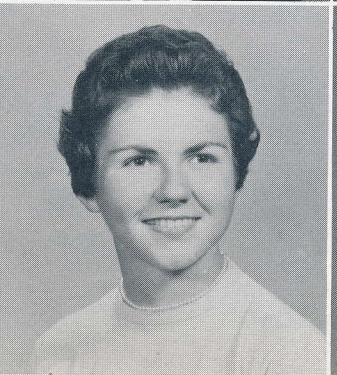


## RAFAELLA DEFINI

G.A.A., Homeroom Officer, Intramurals, Booster Club, Citizenship, Showboat, Glee Club, Valentine Honor Assembly, Leaders, Teacher's Secretary, Office Assistant.

## LYNNE DAVIS

Pep Band, Band, Booster Club, Citizenship, Homeroom Officer, G.A.A., Leaders, National Honor Society, Intramurals, Teacher's Secretary, Y-Teens.



## NICK DEMCHAK

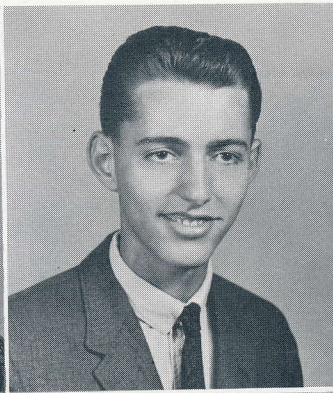
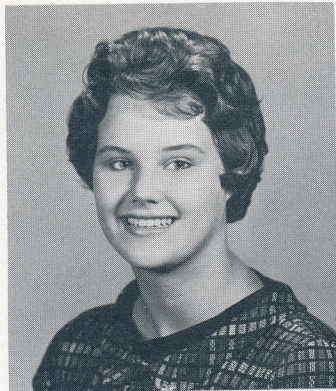
Intramurals.



# Seniors, June, 1962

## BARBARA DEMORE

G.A.A., Leaders, Booster Club, Future Nurses, Teacher's Secretary, Intramurals, Hostess Club, Y-Teens, Citizenship, Latin Club.

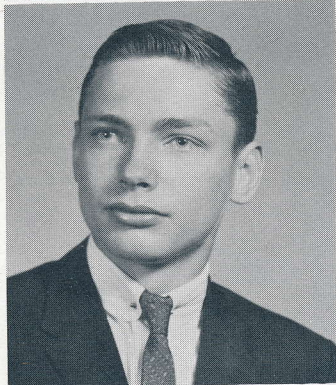


## DOUG DOBBERT

Homeroom Officer, Mirror Staff, Intramurals, Citizenship, Track.

## RICHARD DEPENBROK

Homeroom Officer, Valentine Honor Assembly, Intramurals, Wrestling, Citizenship, Varsity G-Club.



## RHONDA DUHN

Glee Club, G.A.A., Intramurals, Y-Teens.

## LARRAINE DIEBOLD

Glee Club, Citizenship, Hall Guard, Booster Club, Showboat, Canteen, Teacher's Secretary, Office Assistant, Yearbook Staff, Holy Name High School.

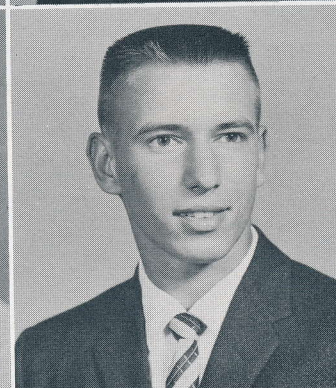


## JOLLAN DURDON

Citizenship, Teacher's Secretary, Switchboard, Intramurals, Y-Teens, Booster Club.

## JOAN DI MARCO

Teacher's Secretary, Booster Club, Mirror Staff, G.A.A., Showboat, Glee Club, Citizenship, Office Production, Intramurals, Office Assistant.

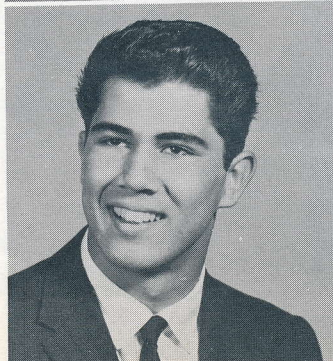


## WILLIAM DYNDUR

Cross-Country Track, Homeroom Officer, Choir, Intramurals, Citizenship, Varsity-G Club.

## JOHN DISCENZA

Football, Track, Varsity-G Club, Citizenship, Showboat, Intramurals, King's Attendant.



## SUSAN EASTMAN

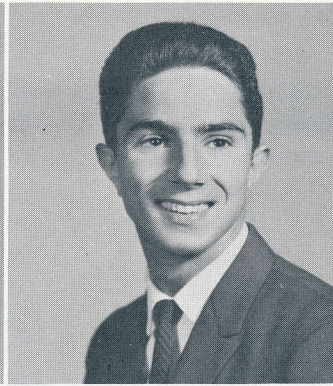
G.A.A., Junior Council on World Affairs, Library Club, Canteen, Citizenship, Choir, Teacher's Secretary, Yearbook Staff, Hall Guard.



# Seniors, June, 1962

## PATRICIA ERNI

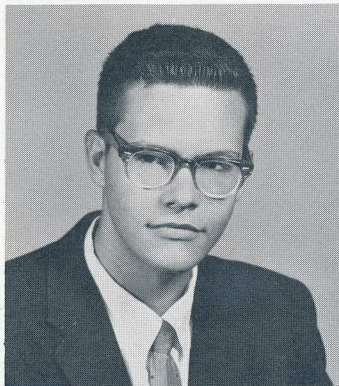
G.A.A., Y-Teens, Booster Club, Junior Council on World Affairs, Mirror Staff, Intramurals, Citizenship, Business Girls, Teacher's Secretary, Hostess Club, Office Production.



## PETE FAZIO

Football, Track, Varsity-G Club, Intramurals, Latin Club, King's Attendant.

## DANIEL EVERISS



## ELAINE FEJER

Showboat, Glee Club, Usher's Club, G.A.A., Business Girls, Citizenship, Intramurals, Library Club, Librarian, Junior Council on World Affairs, Booster Club.

## JULI EWALD

Booster Club, G.A.A., Intramurals, Teacher's Secretary.

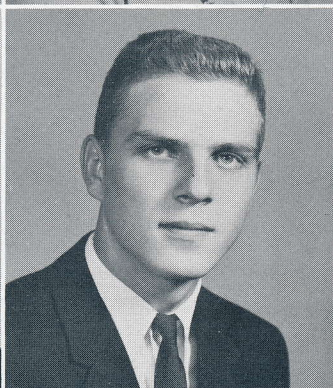
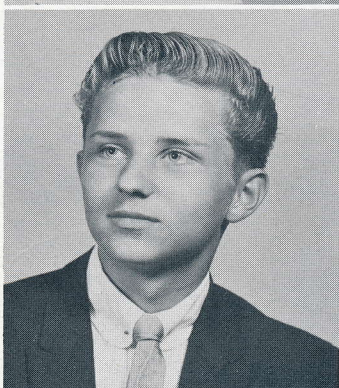


## MARGARET FINUCAN

Citizenship, G.A.A., Intramurals, Usher's Club, Business Girls, Library Club, Homeroom Officer, Junior Council on World Affairs, Booster Club, Librarian.

## EDDIE FABER

Stage Guild, Intramurals.

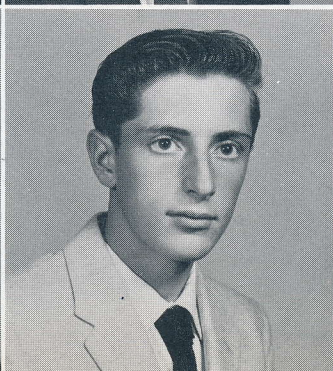
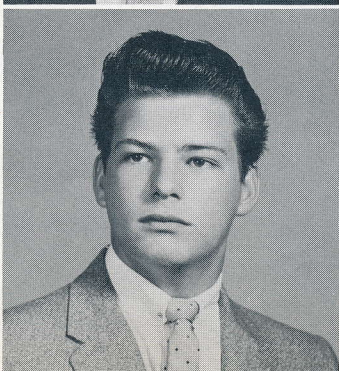


## FRANK FLACK

Homeroom Officer.

## GEORGE FAWCETT

Stage Guild, Auditorium Manager.



## THOMAS FLUTE

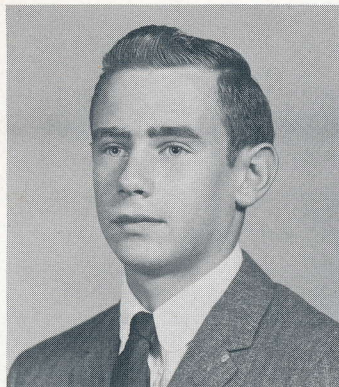
Citizenship, Intramurals.



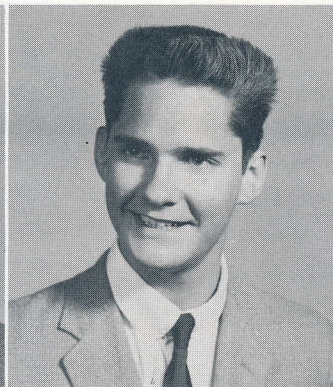
# Seniors, June, 1962

**MARK FOTH**

Intramurals.



**LAWRENCE GAILLARD**



**DIANE FRACASSO**

Business Girls, Citizenship, Y-Teens, G.A.A., Glee Club, Intramurals, Teacher's Secretary, Booster Club, Yearbook Staff, Future Teachers.



**BOB GALLAVAN**



**SHERRY FRY**

Glee Club, Ushers Club.



**CAROL GALLUCCI**

Triple Trio, Y-Teens, Choir, Future Teachers, National Honor Society, Class Officer, Homeroom Officer, Queen's Attendant, G.A.A., Showboat, Yearbook Staff, Teacher's Secretary.



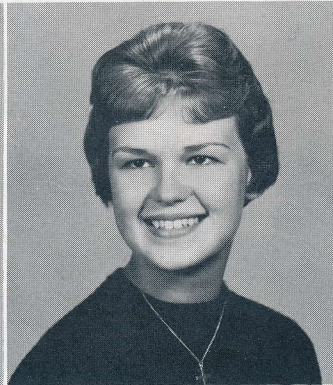
**CYNTHIA FURBEE**

Hostess Club, G.A.A., Intramurals, Canteen, Y-Teens.



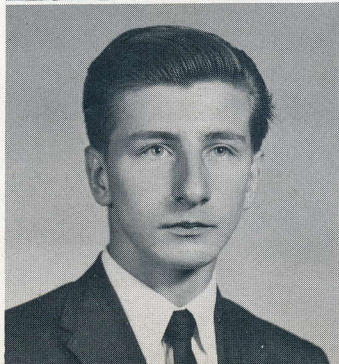
**MARY GARDOCKI**

Y-Teens, G.A.A., Booster Club, Citizenship, Showboat, Canteen, Hostess Club, Glee Club, Intramurals.



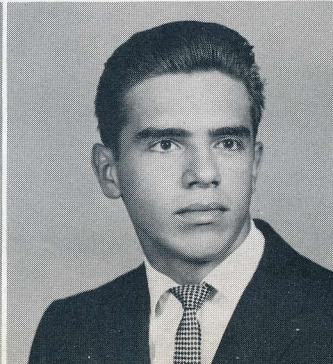
**CHARLES GABRELSKI**

Benedictine High School.



**FLORIAN GEMBICKI**

Homeroom Officer, Canteen, Football Manager, National Honor Society, Varsity-G Club, Intramurals, Citizenship, Valentine Honor Assembly.

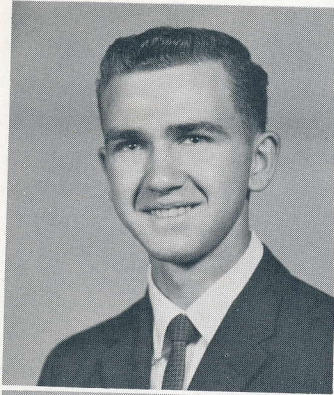




# Seniors, June, 1962

## **WILLIAM GIBBONS**

Cross-Country, Citizenship, Varsity-G Club, Homeroom Officer.

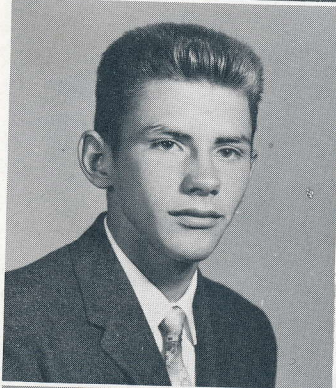


## **GWENN GRAHAM**

Citizenship, Y-Teens, Booster Club, Mirror Editor, G.A.A., Queen's Attendant, Junior Council on World Affairs, Leaders, Science Fair, Showboat, Teacher's Secretary, Homeroom Officer.

## **FRANK GILANYI**

Basketball, Intramurals, Citizenship.

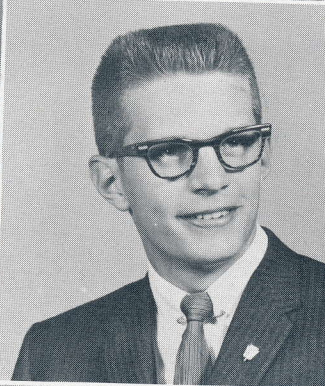


## **BEVERLY GRUENDLER**

Glee Club, Ushers Club, Business Girls, Junior Council on World Affairs, Intramurals, Citizenship, Showboat.

## **BARBARA GOFORTH**

Showboat, Glee Club, Citizenship.

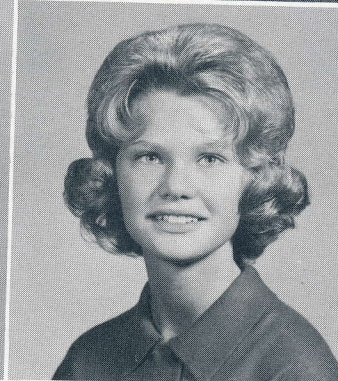


## **ROGER GRUGLE**

Baseball, National Honor Society, Varsity-G Club, Intramurals, Homeroom Officer, Class Officer, Citizenship, State Tests, Mirror Staff, Football.

## **ROBIN GORECKI**

Leaders, Y-Teens, G.A.A., Homeroom Officer, Teacher's Secretary, Switchboard, Choir, Glee Club, Valentine Honor Assembly, Showboat, Booster's Club, Citizenship.



## **CHRISTINE GUTKOWSKI**

Booster Club, Hostess Club, Y-Teens, Citizenship, Teacher's Secretary, Homeroom Officer, Glee Club, Future Nurses, G.A.A.

## **JANET GOSSELIN**

G.A.A., Booster Club, Y-Teens, Future Teachers, National Honor Society, Teacher's Secretary, Citizenship, Leaders, State Tests, Mirror Staff, Intramurals.



## **JOANN GUY**

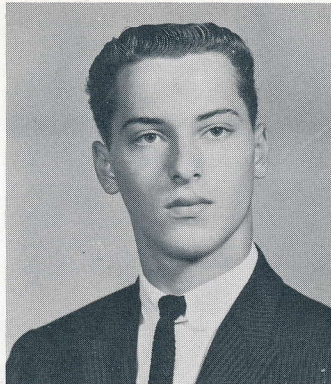
Intramurals, Hostess Club, Glee Club, Showboat, Booster Club, Y-Teens, Teacher's Secretary.



# Seniors, June, 1962

## RICHARD GUZOSKI

Choir, Track, Cross-Country, Homeroom Officer, Intramurals, Varsity-G Club, Showboat.

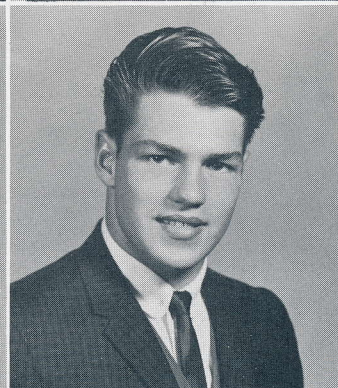
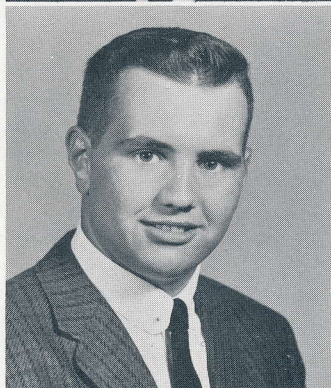


## DARLENE HATTAN

G.A.A., Y-Teens, Teacher's Secretary, Intramurals, Business Girls Booster Club, Hall Guard, Citizenship.

## ANDREW HALEPIS

Varsity-G Club, Football, Intramurals, King's Attendant.

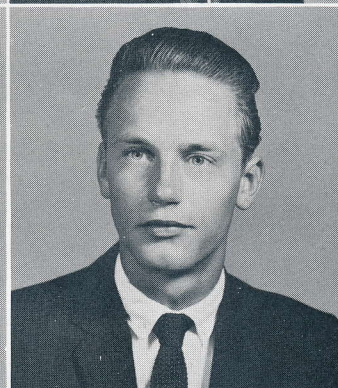


## ROBERT HAZEN

Football, Wrestling, Intramurals, Varsity-G Club, Citizenship, Mixed Chorus, King's Attendant.

## SHARON HANTAK

Homeroom Officer, State Tests, Art Production, Art Club, Y-Teens, Junior Council on World Affairs, Mirror Staff, Citizenship, G.A.A., Future Teachers, National Honor Society, Leaders.

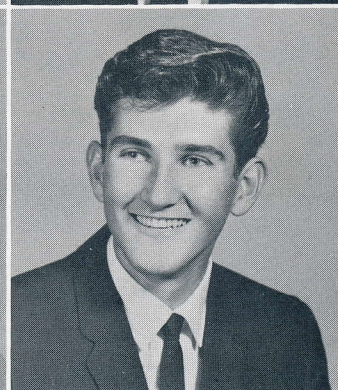


## LEWIS HEGYI

Intramurals.

## SHIRLEY HANTAK

Homeroom Officer, Citizenship, Leaders, Booster Club, National Honor Society, Junior Council on World Affairs, Art Club, Y-Teens, G.A.A., Mirror Staff, Teacher's Secretary, Future Teachers.

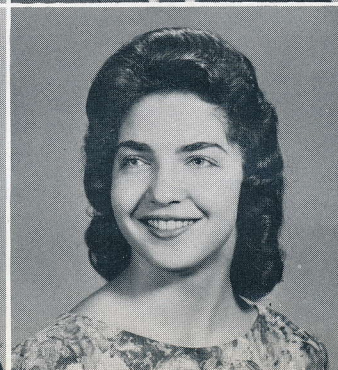


## BILL HEINZ

Intramurals, Showboat.

## JEANETTE HANUS

G.A.A., Y-Teens, Booster Club, Homeroom Officer, Intramurals, Citizenship, Glee Club, Showboat, Leaders, Hostess Club, Office Assistant, Canteen.



## SUSAN HEJDA

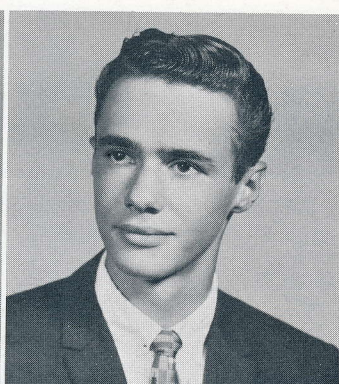
Homeroom Officer, Band, G.A.A., Citizenship, Intramurals, Office Production.



# Seniors, June, 1962

## CHRISTINA HENLEY

Mirror Staff, Homeroom Officer, Citizenship, Valentine Honor Assembly, Showboat, Teacher's Secretary.

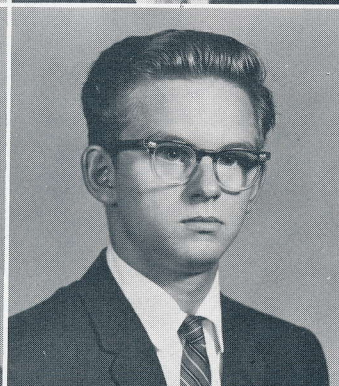
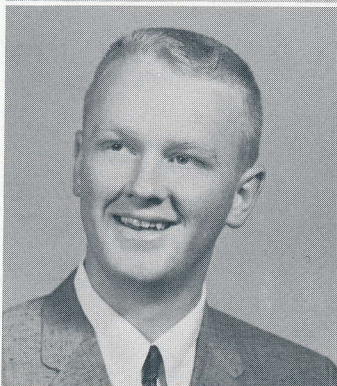


## GARY HOLAN

Intramurals, Art Club, Teacher's Assistant.

## KARL HESSELBEIN

Showboat, Junior Council on World Affairs, Spanish Club, Choir, Intramurals.

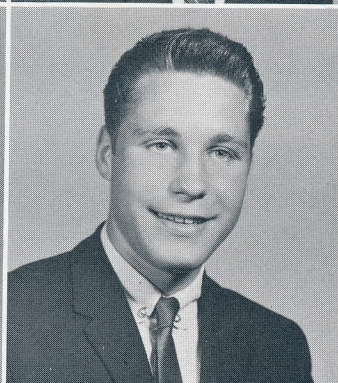


## NORMAN HONEK

Intramurals, Canteen.

## DOROTHY HILBERER

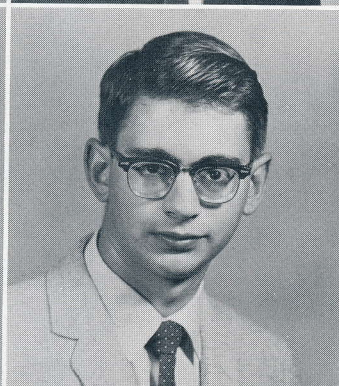
Intramurals, Citizenship, Glee Club, Lab Assistant, Showboat.



## JOHN HORNICK

## MARILYN HLAVIN

Y-Teens, G.A.A., Booster Club, Intramurals, Teacher's Secretary, Showboat.



## EDWARD HORVATH

Movie Guild.

## BONNIE HOBAN

Glee Club, Showboat, Canteen, Valentine Honor Assembly, G.A.A., Y-Teens.



## JANICE HRABAK

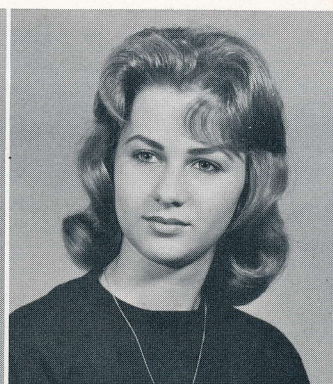
Leaders, Glee Club, Intramurals, Citizenship, Business Girls.



# Seniors, June, 1962

## CHARLES IAMMARINO

Mixed Chorus, Wrestling, Homeroom Officer, Showboat, Citizenship, Intramurals.

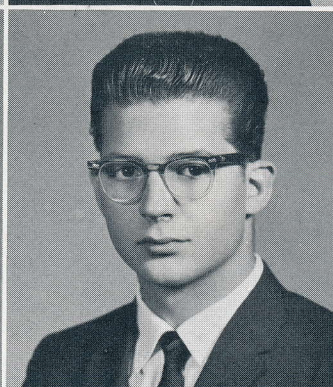


## CHRISTINE JAKUBISIN

Hall Guard, Mixed Chorus, Booster Club, Citizenship, Teacher's Secretary, Homeroom Officer, Y-Teens, Hostess Club, Office Assistant.

## DOROTHEA IGLODI

G.A.A., Y-Teens, Teacher's Secretary, Hall Guard, Intramurals, Business Girls, Library Club, Citizenship, Office Assistant.

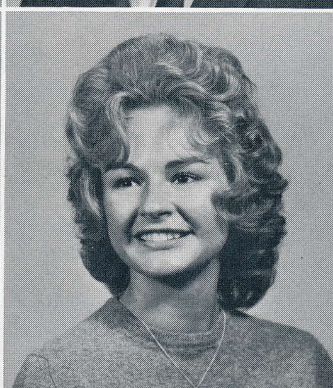


## PAUL JANKO

Band, Pep Band, Intramurals, Showboat.

## JANICE JABLONSKI

Y-Teens, G.A.A., Intramurals, Chorus, Homeroom Officer, Triple Trio, Mixed Ensemble, Queen's Attendant, Showboat, Booster Club, Citizenship.

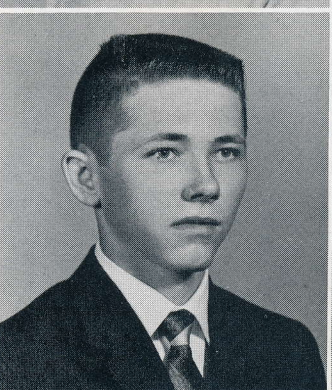


## SHARON JANUSKA

Leaders, Teacher's Secretary, G.A.A., Booster Club, Intramurals, Hall Guard, Choir, Y-Teens, Business Girls, Glee Club.

## BARNEY JOHODA

Homeroom Officer, Intramurals.

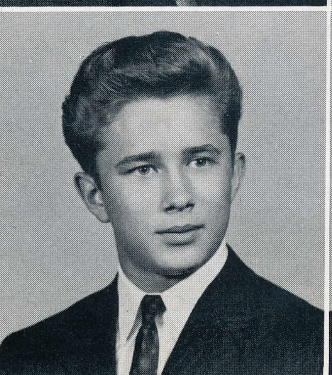


## AGNES JELINEK

G.A.A., Y-Teens, Future Teachers, Citizenship, Teacher's Secretary, Leaders, Intramurals, Booster Club, Alexander Hamilton.

## WILLIAM JAKACKI

Intramurals, Homeroom Officer.



## DENISE JOCKERS

Booster Club, G.A.A., Intramurals, Citizenship.



# Seniors, June, 1962

## JANICE JOHNS

G.A.A., Booster Club, Y-Teens, Teacher's Secretary, Office Assistant, Glee Club, Citizenship, Homeroom Officer, Showboat, Intramurals.

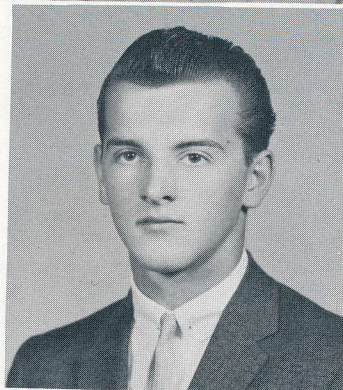


## DIANE KAMINSKI

G.A.A., Intramurals, Hostess Club, Booster Club, Y-Teens, Mixed Chorus, Citizenship, Business Girls, Canteen, Showboat.

## RONALD JOHNS

Intramurals.

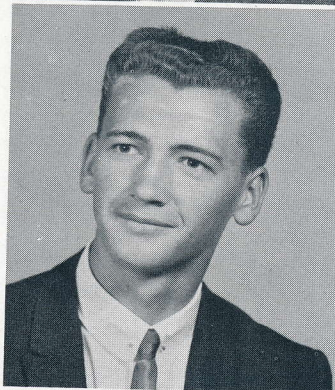


## KATHLEEN KERSCHER

G.A.A., Citizenship, Teacher's Secretary, Leaders, Business Girls, Intramurals, Y-Teens.

## DAN KACZOR

Basketball, Baseball, Intramurals, Varsity-G Club, Homeroom Officer, Citizenship.



## KAREN KING

G.A.A., Art Production, Intramurals, Choir, Art Club, Aurora High School.

## JOAN KACZMARCZYK

Ushers Club, Business Girls, Homeroom Officer, Citizenship, Intramurals.

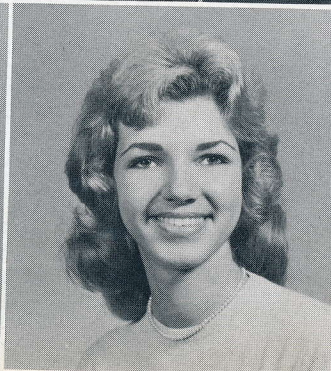
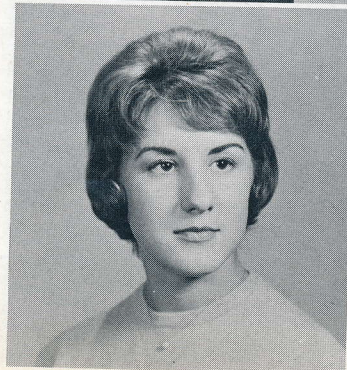


## LINDA KIRSCHEN

G.A.A., Intramurals, Citizenship, Future Nurses, Hall Guard, Junior Council on World Affairs, Glee Club, Collinwood High School.

## PHYLLIS KALMANEK

Citizenship, Homeroom Officers, Showboat, Leaders, Intramurals, G.A.A., Y-Teens, Junior Council on World Affairs, Booster Club.



## PATRICIA KISH

Booster Club, Citizenship, Y-Teens, Mixed Chorus.